
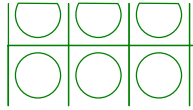


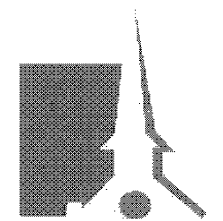


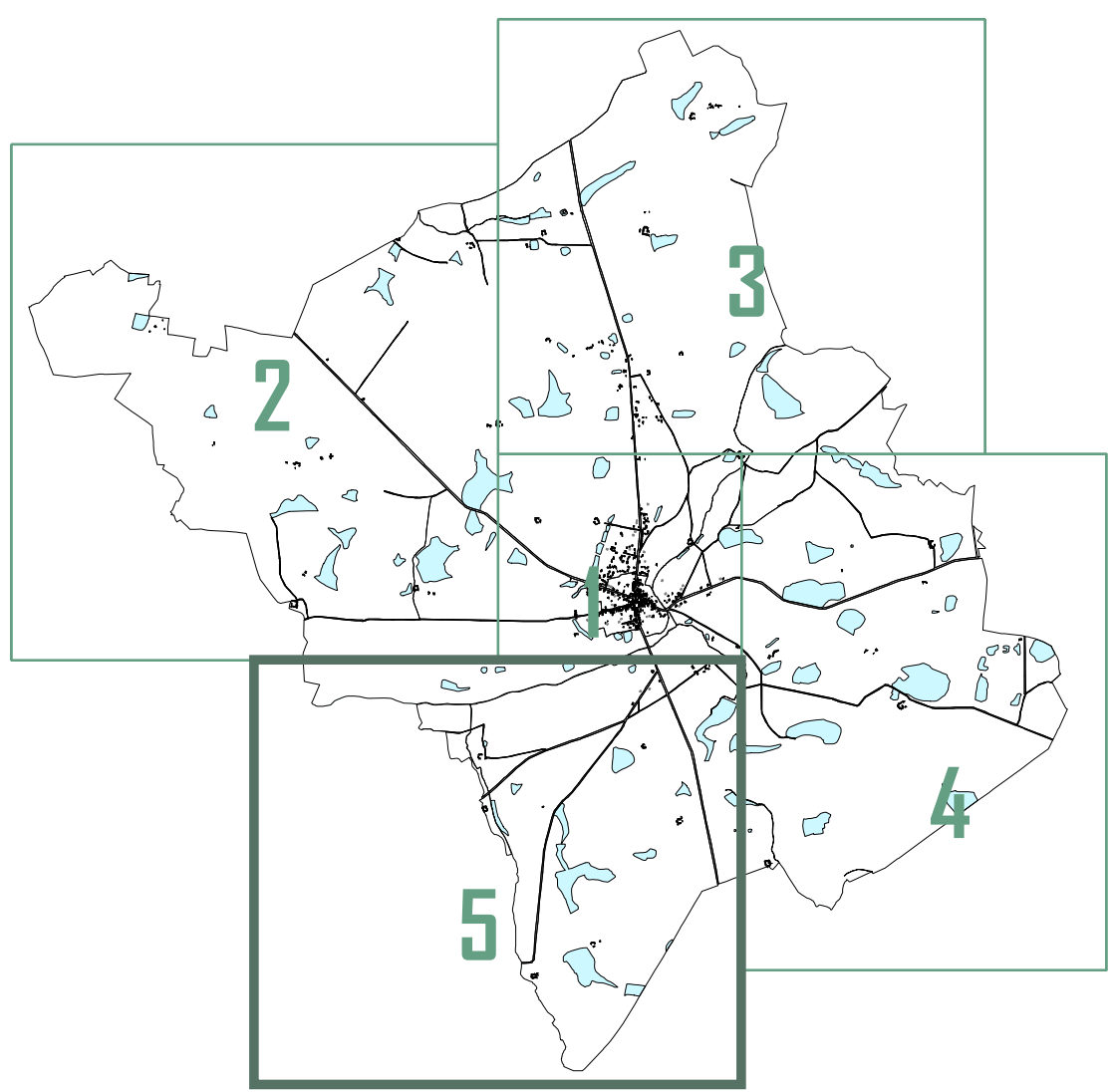
LEGENDE

-  limite de zone
-  Espace boisé classé à conserver, à créer
-  EPAC - boisement/art.L123-1.5.7
-  EPAC - haie/art.L 123-1.5.7



DEPARTEMENT DU LOIRET

VANNES SUR COSSON



Plan Local d'Urbanisme

4.5 PLAN DE ZONAGE au 1/5000

Cabinet RAGEY
 Géomètre-Expert Urbaniste
 04 chemin de la Fontaine - 45000 Orléans
 Tél. 02 38 27 07 07 fax. 02 38 27 07 08
 cragey@orange.fr
 2009 025 91044

PLU approuvé le 24/06/2013